

The battery features a thermal fuse with a reset fuse that will automatically trip and cut all power to the vehicle if the motor, electric system or battery is overloaded. The fuse will reset and power will be restored after the unit is turned OFF for 20 seconds and then turned ON again. If the thermal fuse trips repeatedly during normal use, the vehicle may need repair. **Contact your distributor please.**

To avoid losing power, follow these guidelines:

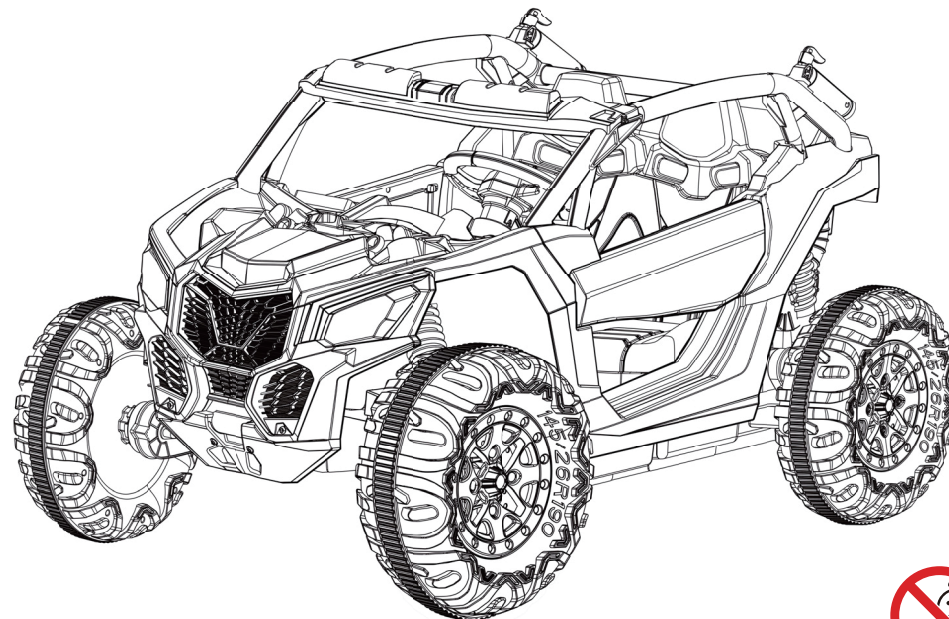
- Do not overload the vehicle.
- Do not tow anything behind the vehicle.
- Do not drive up steep slopes.
- Do not drive into fixed objects, which may cause the wheels to spin, causing the motor to overheat.
- Do not drive in very hot weather, components may overheat.
- Do not allow water or other liquids to come in contact with the battery or other electric components.
- Do not tamper with the electric system. Doing so may create a short, causing the fuse to trip.



**RISK OF FIRE. Do not bypass. Replace only with a new fuse.**



## 2 SEATER POLICE UTV



# OWNERS MANUAL

with Assembly Instructions

**Read and understand this entire manual before using!**

Please keep this manual for future reference as it contains important information. Before first time use, charge the battery for at least 4-6 hours, but no more than 10 hours.

## About Your New Vehicle

1

On the purchase of your new Ride-On.

This ride-on car will provide your child with many miles of riding of enjoyment. To help assure you and your rider a safe ride we ask you to please read this manual carefully, and keep it for future reference.

Follow the recommendations in this manual, they are designed to improve the safety and operation of your ride-on car and its rider.

### Specification

<b>Battery</b>	12V7AH X1	12V10AH X1	24V7AHx1
<b>Charger</b>	12V1000mA	12V1000mA	24V1000mA
<b>input</b>	Depend on local voltage		
<b>Motor</b>	550-12000	550-12000/13500or555-15000	550-13500or555-15000
<b>Steering motor</b>	390-5500 or 9000	390-5500 or 9000	390-5000 or 9000

**Suitable age:** 37-96 Months

**Charge time:** 8-12 hours

**Load capacity:** 60KGS/132LBS

**Size of car:** 133\*92\*80 CM /52.36\*36.22\*31.49 INCH

**Speed:** 3-8KM/H /1.62-4.32MPH

## Maintaining

18

- It is parents' responsibility to check main parts of the toy before using, must regularly examine for potential hazard, such as the battery, charge, cable or cord, plug, screws are fastening enclosure of other parts and that in the event of such damage, the toy must not be used until that damage had been properly removed.
- Make sure the plastic parts of the vehicle are not cracked or broken.
- Occasionally use a lightweight oil to lubricate moving parts such as wheels.
- Park the vehicle indoors or cover it with a tarp to protect it from wet weather.
- Keep the vehicle away from sources of heat, such as stoves and heaters. Plastic parts may melt.
- Recharge the battery after each use. Only an adult can handle the battery. Recharge the battery at least once a month when the vehicle Raider is not being used.
- Do not wash the vehicle with a hose. Do not wash the vehicle with soap and water. Do not drive the vehicle in rainy or snowy weather. Water will damage the motor, electric system and battery.
- Clean the vehicle with a soft, dry cloth. To restore shine to plastic parts, use a non-wax furniture polish. Do not use car wax. Do not use abrasive cleaners.
- Do not drive the vehicle in loose dirt, sand or fine gravel which could damage the moving parts, motors or the electric system.
- When not using, all the electrical source should be turn off. Turn off the power switch and disconnect the battery connection.

### Battery Disposal



The battery will eventually lose the ability to hold a charge. Depending on the amount of use, and varying conditions, the battery should operate for one to three years.

**Important!** Recycle the dead battery responsibly. The battery contains lead acid (electrolyte) and must be disposed of properly and legally. It is illegal in most areas to incinerate lead acid batteries or dispose of them in landfills. Take it to a federal or state-approved lead acid battery recycler, such as local automotive battery retailer.

Do not throw the battery away with your regular household waste!

## Troubleshooting Guide

17

Problem	Possible Cause	Solution
Vehicle does not run	Battery low on power	Recharge battery.
	Thermal fuse has tripped	Reset fuse, see <Fuse>
	Battery connector or wires are loose	Check that the battery connectors are firmly plugged into each other. If wires are loose around the motor <b>contact your distributor please.</b>
	Battery is dead	Replace battery, <b>contact your distributor please.</b>
	Electrical system is damaged	<b>Contact your distributor please.</b>
	Motor is damaged	<b>Contact your distributor please.</b>
Vehicle does not run very long	Battery is under charged	Check that the battery connectors are firmly plugged into each other when recharging
	Battery is old	Replace battery, <b>contact your distributor please.</b>
Vehicle runs sluggishly	Battery low on power	Recharge battery, <b>contact your distributor please.</b>
	Battery is old	Replace battery, <b>contact your distributor please.</b>
	Vehicle is overload	Reduce weight on vehicle.
	Vehicle is being used in harsh conditions	Avoid using vehicle in harsh conditions ,see <Safety>.
Vehicle needs a push to go forward	Poor contact of wires or Connectors	Check that the battery connectors are firmly plugged into each other. If wires are loose around the motor, <b>contact your distributor please.</b>
	"Dead Spot" on motor	A dead spot means the electric power is not being delivered to the terminal connection and the vehicle needs repair. <b>Contact your distributor please.</b>
Difficult shifting from forward to reverse or vice-versa	Attempting to shift while the vehicle is motion	Completely stop the vehicle and shift, see <Use Your New Vehicle>
Loud grinding or clicking noises coming from motor or gear box	Motor or gears are damaged	<b>Contact your distributor please.</b>
Battery will not recharge	Battery connector or adapter connector is loose	Check that the battery connectors are firmly plugged into each other.
	Charger not plugged in	Check that the battery charger is plugged into a working wall outlet.
	Charger is not working	<b>Contact your distributor please.</b>
Charger feels warm when recharging	This is normal and not a cause for concern	

Completely read through this manual and the troubleshooting guide table before calling. If you still need help resolving the problem **Contact your distributor please.**

## Parts List

2

PART NO.	PART NAME	Q'ty (pcs)		REMARKS
		2WD	4WD	
1	Vehicle body	1	1	
2	Rear gear box	2	2	
3	Wheel	4	4	
4	Ø12 washer	6	4	
5	Lock nut	4	4	
6	Wheel cover	4	4	
7	Rear axle	1	1	
8	Windshield	1	1	
9	Steering wheel	1	1	
10	Seat board	1	1	
11	Charging port	1	1	
12	Ø4x12 screw	6	6	
13	Rear trunk plate	1	1	
14	Seat back	1	1	
15	Seat	1	1	
16	Roll bar linkage	1	1	
17	Roll bar support	2	2	Left and right
18	Spanner	2	2	
19	Charger	1	1	
20	Remote controller	1	1	

### Assembly tools required (included):

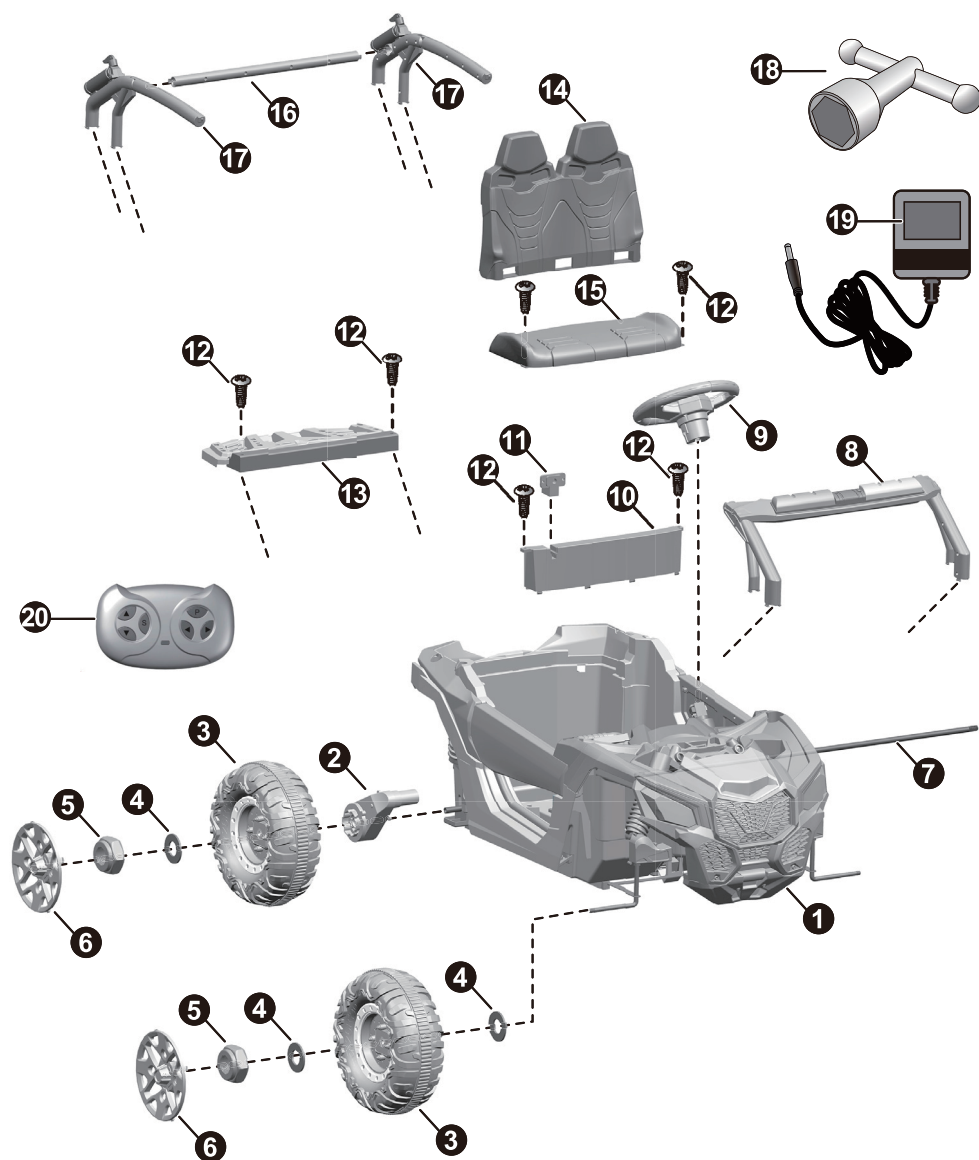


Screwdriver

## Parts Diagram

3

HINT: Some parts shown are assembled on both sides of vehicle



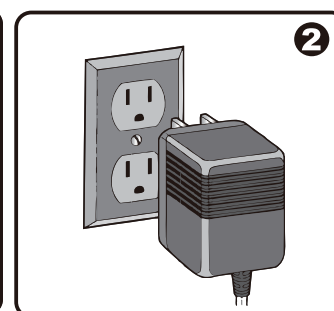
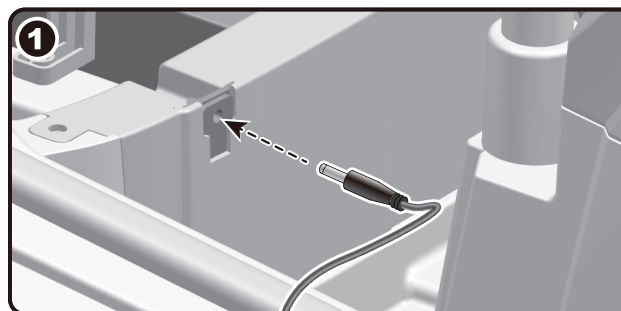
## Charging

16

### WARNING!

- **ONLY an adult is allowed charge and recharge the battery!**
- **This product with Charging Protection: when charging, all functions will be cut off.**

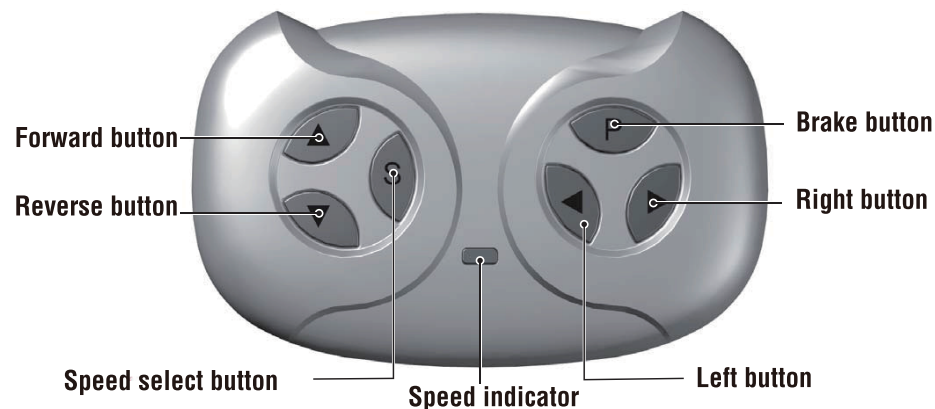
- Turn off the product when charging.
- Before the first use, you should charge the battery for 4-6 hours. Do not recharge the battery for more than 10 hours to avoid overheating the charger.
- When the vehicle begins to run slowly, recharge the battery.
- After each use or once a month minimum recharge time as 8 to 12 hours, less than 20 hours at most.
- Use the only rechargeable battery and charger supplied with your vehicle. NEVER substitute the battery or the charger with another brand. Using another battery or charger may cause a fire or explosion.
- Do not use the battery or charger for any other product.



1. Plug the charger port into the input socket (the socket is under the seat).
3. Plug the charger plug into a wall outlet. The battery will begin charging.



**WARNING:** The remote control is only allowed to be operated by adults.



### Attach the batteries of controller

Lift the battery compartment door on the back of the controller and insert two AAA(LR03) batteries.

**HINT: Batteries not included. Refer to the Battery Information on the page 4.**

### 1. Build connection

Long press the forward and reverse buttons for 3 seconds, and the speed indicator flashes. Then power on the vehicle, the speed indicator goes to long bright, means the connection successful. If the speed indicator no response, means the connection failed. Replace the batteries and retry.

### 2. Brake button

Press the button to stop the vehicle, press it again to release the brake.

### 3. Speed select button

The switch operates the vehicle to move in low, normal or high speed.

**HINT: This switch won't work while your vehicle moves reverse.**

### NOTE:

- Leave the remote controller idling for about 10 seconds, it will shut down automatically.
- Rebuild connection when you replace the batteries of the remote controller.

### **WARNING!**

- **CHOKING HAZARD** - Small parts. Not suitable for children under 36 months. The product contains small parts, keep children away when assembling.
- **ADULT ASSEMBLY REQUIRED.**
- Always remove protective material and poly bags and dispose before assembly.
- Protective equipment should be worn. Always wear shoes and sit in the seat when operating the vehicle.
- Only drive on level ground. Never use on the lawn.
- Never leave a child unattended.
- Keep your hands, hair, and clothes away from moving parts.

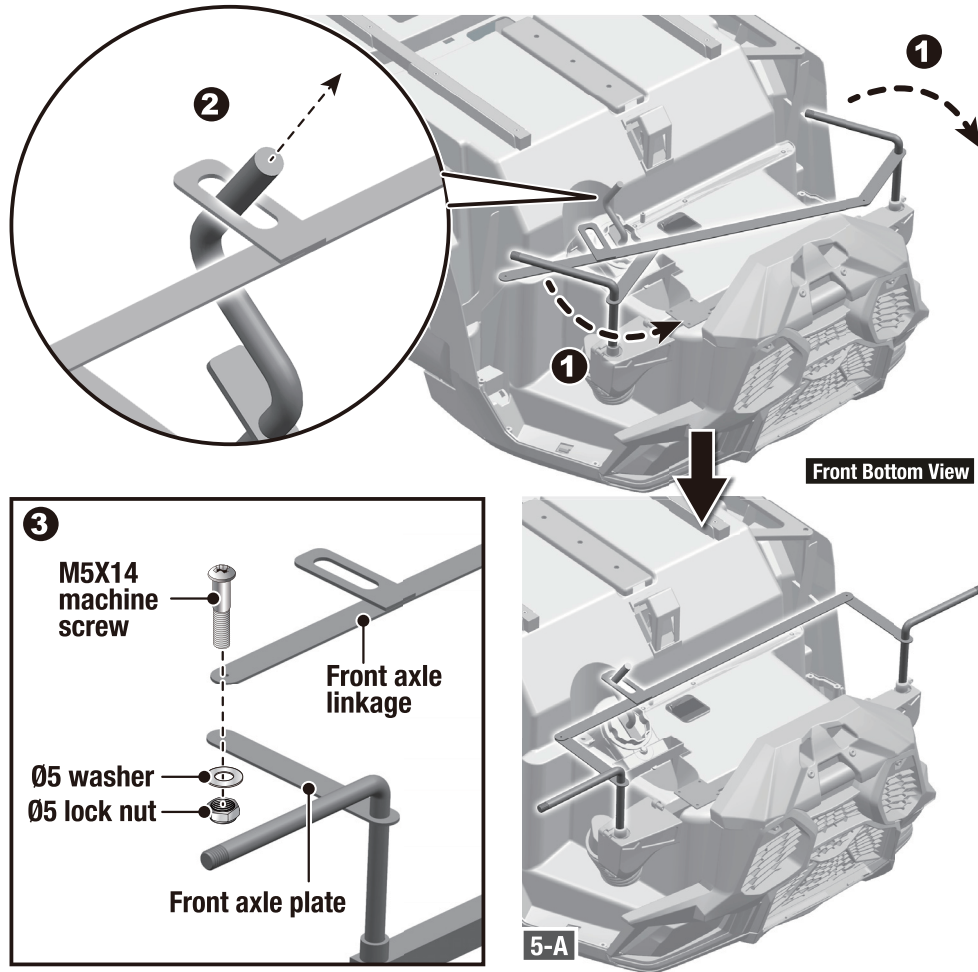
### **SAFETY**

The following safety hazards may result in serious injury or death:

- Never leave child unattended. Direct adult supervision is required. Always keep child in view when child is in vehicle.
- To reduce the risk of injury, adult supervision is required. Never use in roadways, near motor vehicles, on or near steep inclines or steps, swimming pools or other bodies of water, always wear shoes, and never allow more than 2 rider.
- Never use in unsafe conditions such as snow, rain, loose dirt, mud, sand, or gravel, otherwise may result in an unexpected accident such as tipping over, and could damage the electrical system or battery
- Not to be used in traffic.
- This toy should be used with caution since skill is required to avoid falls or collisions causing injury to the user or third parties.
- This toy is unsuitable for children under 36 months due to its maximum speed; Maximum user weight is 60kgs/132lbs.
- This toy has no brake.

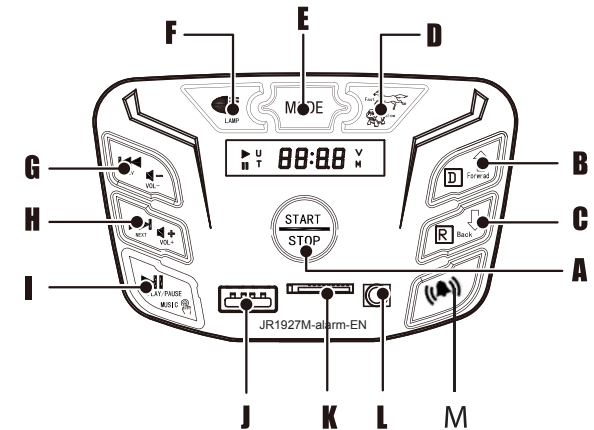
### **BATTERY INFORMATION**

- Non-rechargeable batteries are not to be recharged.
- Rechargeable batteries are to be removed from the toy before being charged.
- Rechargeable batteries are only to be charged under adult supervision.
- Different types of batteries or new and used batteries are not to be mixed.
- Batteries are to be inserted with the correct polarity.
- Exhausted batteries are to be removed from the toy.
- The supply terminals are not to be short-circuited.

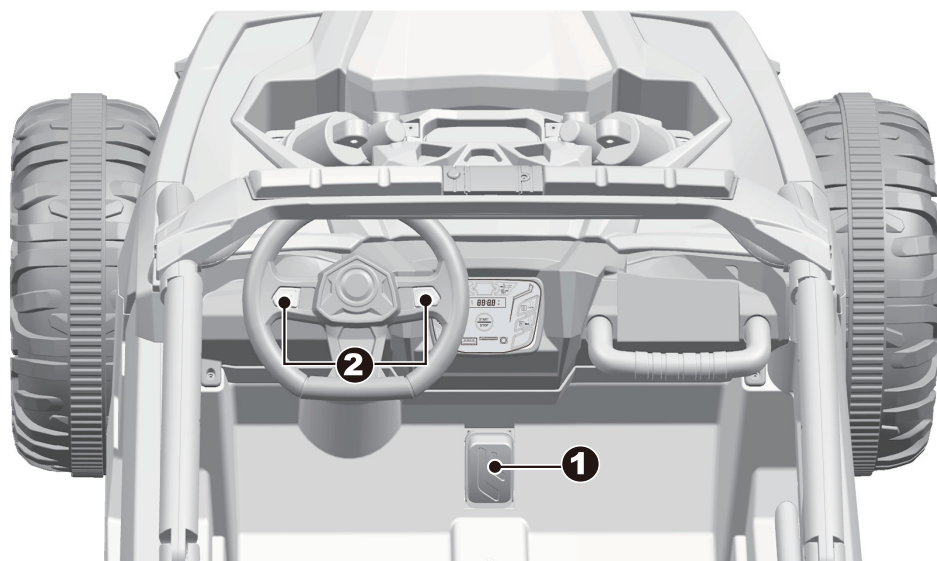


Cut off the plastic tie on the front axle with scissors.

- Adjust the front axle plate so that the axle is in the correct position as shown.
- Ensure the bent end of the steering column is inserted into the hole in the front axle linkage.
- Remove the M5x14 machine screw, Ø5 washer and Ø5 lock nut from the front axle linkage. Reinsert the M5x14 machine screw through the hole on the front axle linkage, the Ø5 washer and the hole on the front axle plate, then fasten the Ø5 lock nut to the opposite end of the screw with a **Long Nose Pliers (Not included)**. AS IMG 5-A.



- A. Power button:** Turns the product on and off.
- B. Forward button:** Press the button, the product enters the forward gear.
- C. Backward button:** Press the button, the product enters the reverse gear.
- D. High/Low speed button:** Operates the product to move forward in high or low speed.
- E. Mode button:** Change the audio input.
- F. Light button:** Turn the searching lights on and off.
- G. Previous track / Long press for Decrease the volume.**
- H. Next track / Long press for Increase volume.**
- I. Play / Pause / Double click to play the built-in songs.**
- J. Multimedia Input**
- K. Storage Input**
- L. AUX input.**
- M. Siren**



**1. Throttle pedal:** Applies power (speed) to the product.

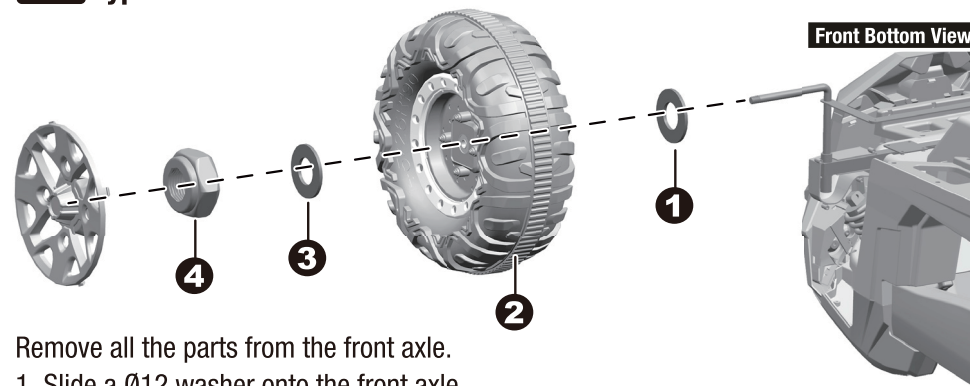
- To move the product, press the pedal down.
- To brake or slow down, release pressure from the pedal.

**2. Sound buttons:** Press for sound or horn playing.

### **IMPORTANT**

- **Always stop vehicle when changing the speed or direction to avoid damage the gears and motor.**
- **HIGH SPEED:** Make sure your child knows how to steer, how to start and stop the product and knows the rules for safe driving.

### **2WD** Type assemble the front wheels

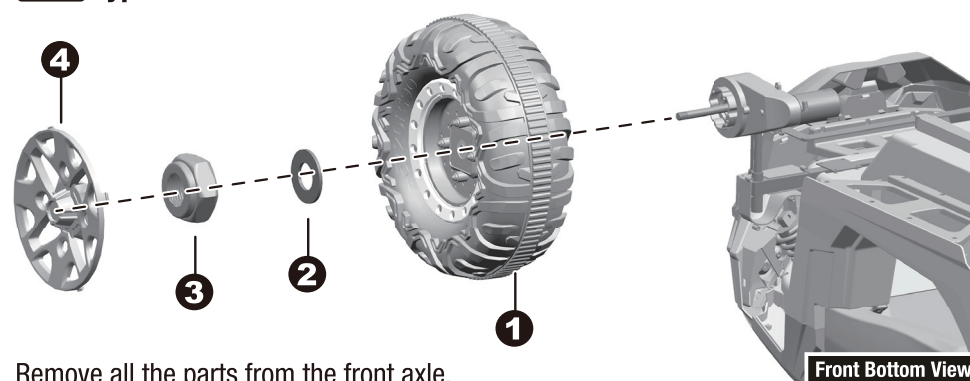


Remove all the parts from the front axle.

1. Slide a Ø12 washer onto the front axle.
2. Slide the wheel onto the front axle. Ensure the driver inside the wheel match up with the gear box.
3. Slide a Ø12 washer onto the front axle.
4. Tighten a lock nut to the end of the front axle with a spanner. DO NOT over tighten.
5. "Snap" the wheel cover to the wheel.

Repeat the above procedure to assemble the other front wheel.

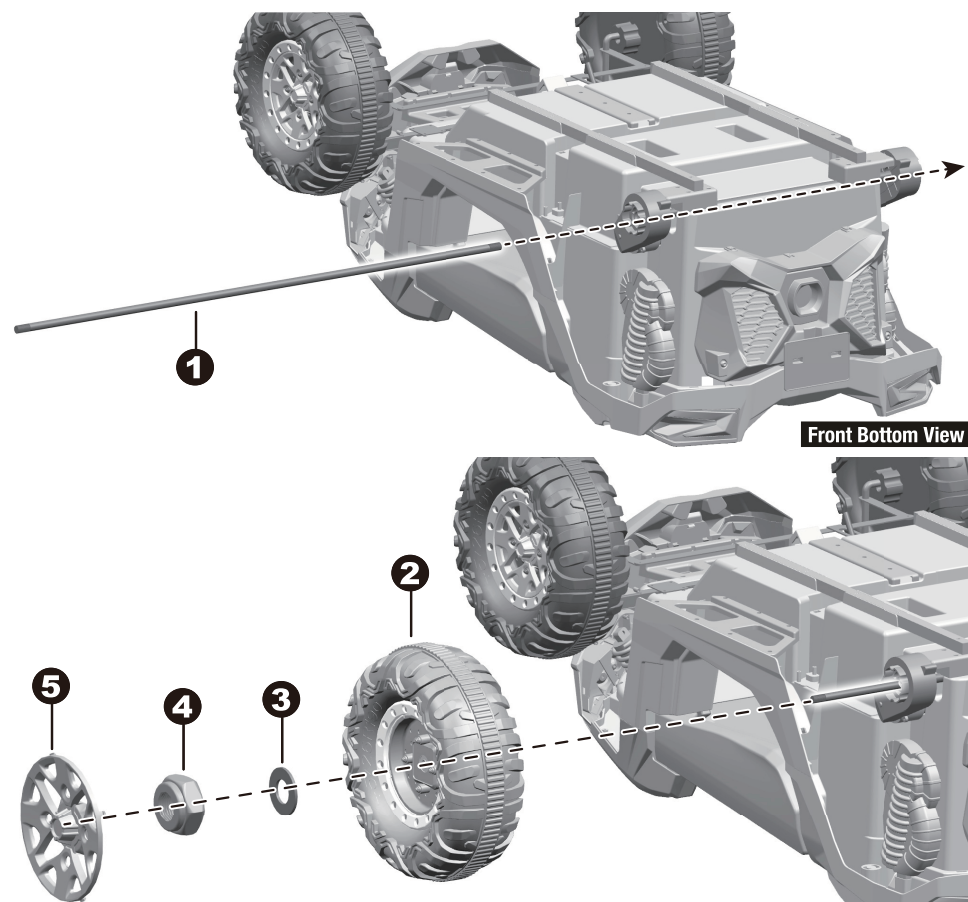
### **4WD** Type assemble the front wheels



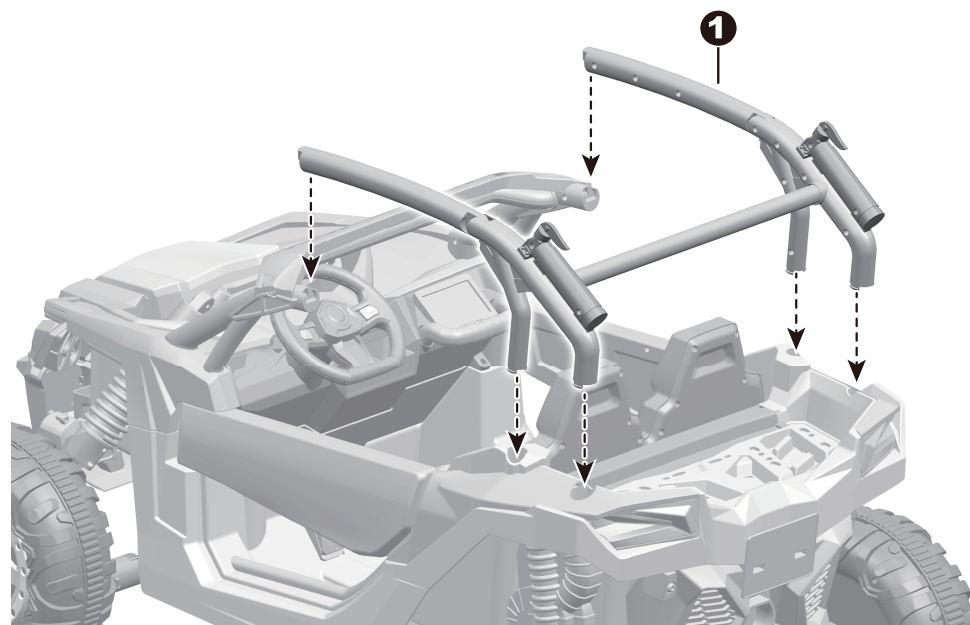
Remove all the parts from the front axle.

1. Slide the wheel onto the front axle. Ensure the driver inside the wheel match up with the gear box.
2. Slide a Ø12 washer onto the front axle.
3. Tighten a lock nut to the end of the front axle with a spanner. DO NOT over tighten.
4. "Snap" the wheel cover to the wheel.

Repeat the above procedure to assemble the other front wheel.



1. Align the holes in the gear boxes with the holes in the vehicle body. Insert the rear axle passes through holes in the gear boxes and in vehicle body. Make sure that the rear axle is centered with left and right ends exposed the same distance outside of the vehicle body.
2. Slide a wheel onto the rear axle, ensure the driver inside the wheel match up with the gear box.
3. Slide a  $\varnothing 12$  washer onto the rear axle.
4. Tighten a lock nut to the end of the front axle with a spanner.
  - Repeat the above procedure to assemble the other rear wheel. **HINT:** An extra spanner has been provided to hold the Lock Nut on the other side of the rear axle while tightening the Lock Nut on the other side. **DO NOT** over tighten.
5. "Snap" the wheel covers to the wheels.

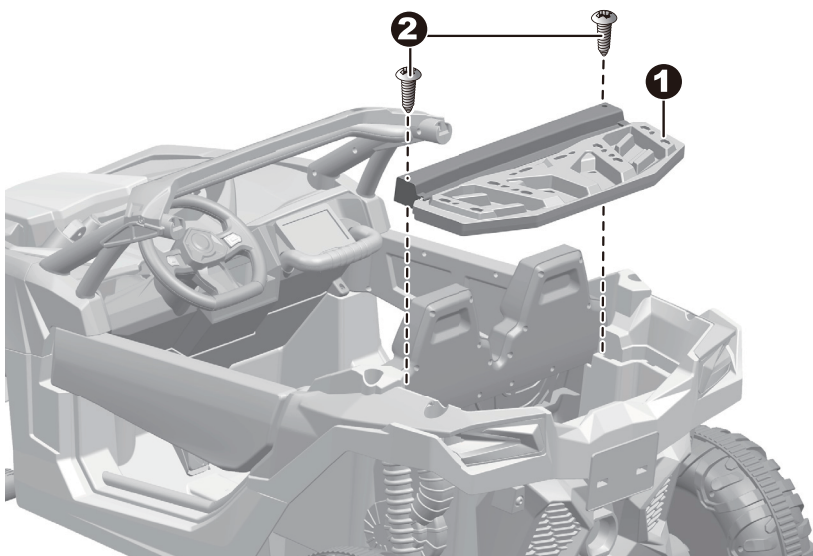


1. Fit the roll bar assembly to the vehicle body. Push until you hear it "click" into place.



## Attach the Rear Trunk Cover.

11

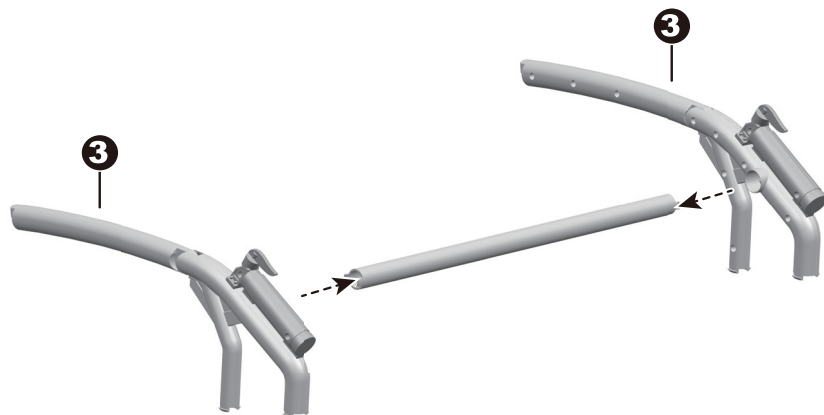


1. Fit the rear trunk cover to the vehicle body.

2. Insert two Ø4x12 screws and tighten.

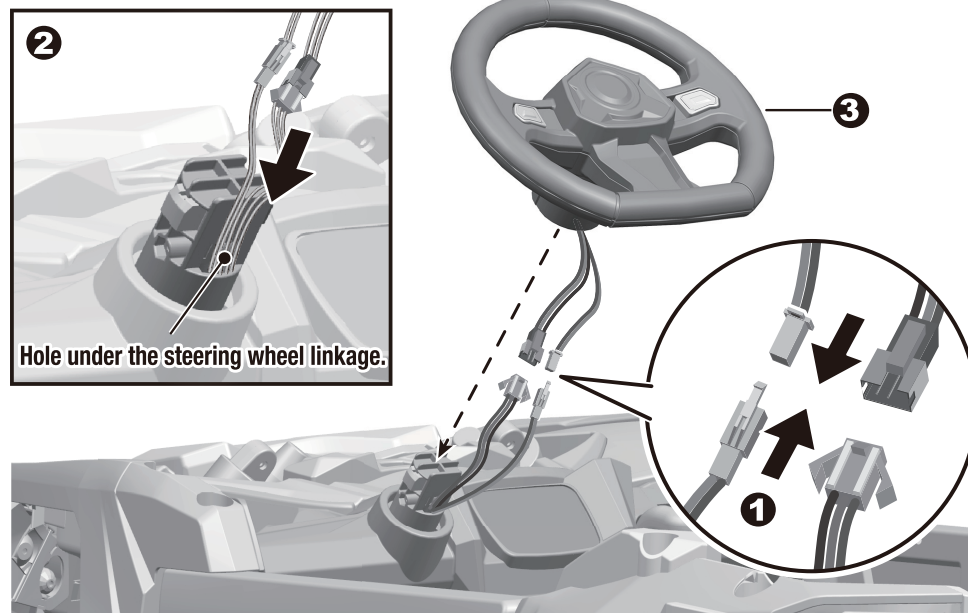
3. Fit the both roll bar supports to the roll bar linkage.

TIPS: To get a better effect, turn the side of the roll bar linkage with the screw holes inward.



## Attach the Steering Wheel & Windshield

8



Turn the vehicle body right side up.

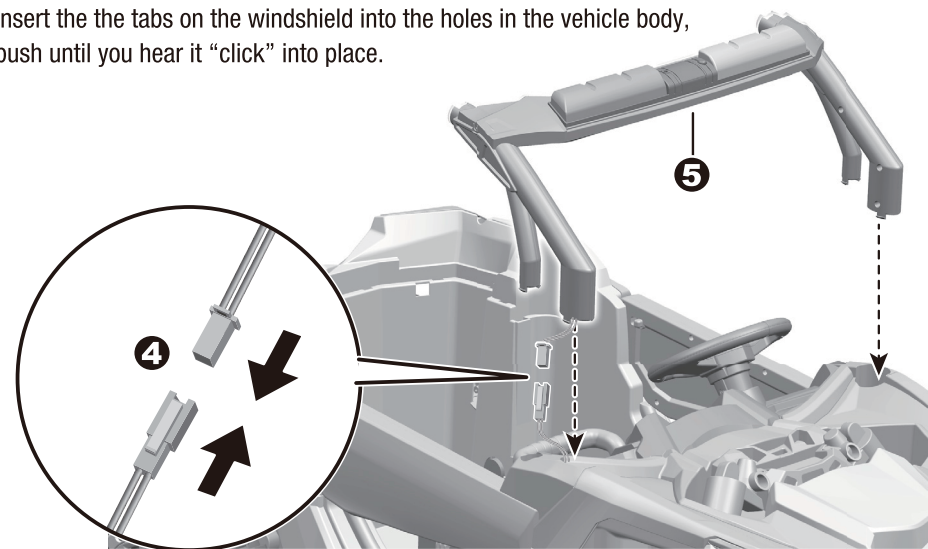
1. Plug the both two connectors on the steering wheel into the two connectors from the hole in the vehicle body.

2. Insert the plugged connectors into the hole above the steering wheel linkage.

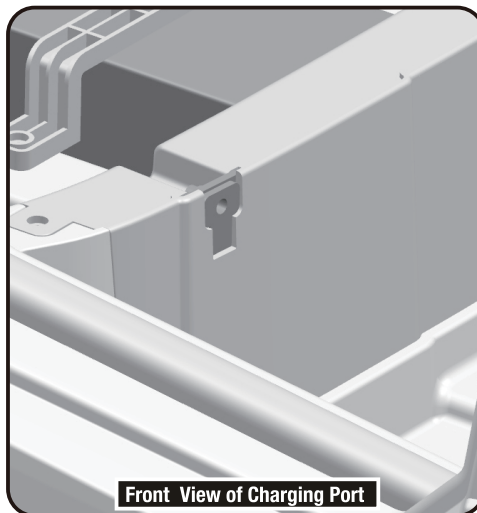
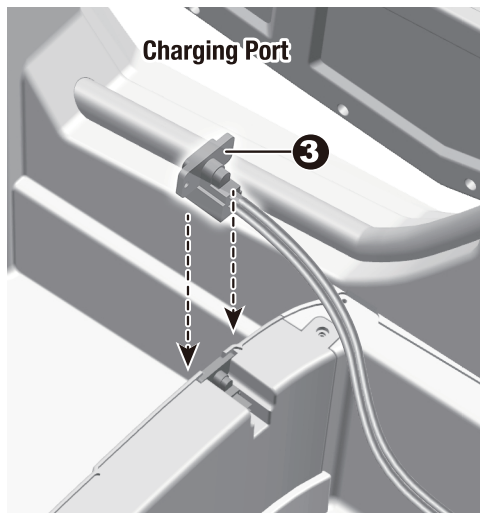
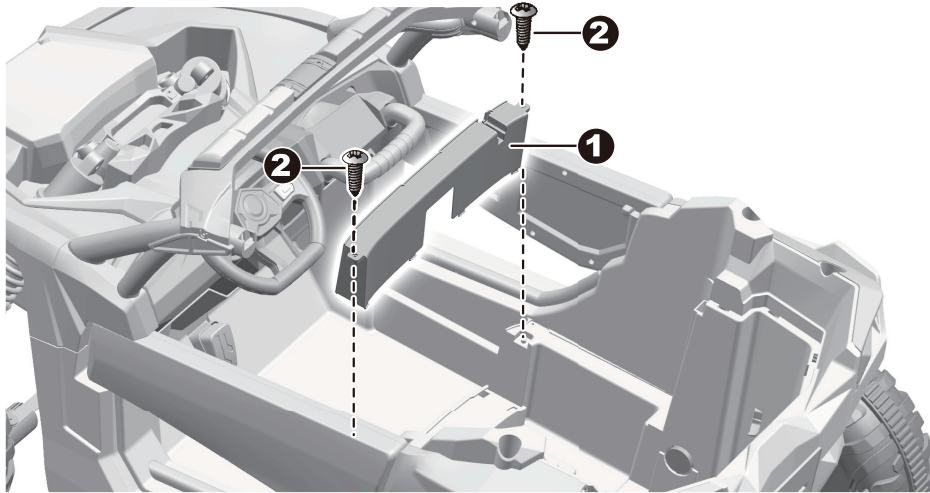
3. Insert the steering wheel to the steering wheel linkage, push until you hear it “click” into place.

4. Plug the light unit connector on the windshield into the connector from the vehicle body.

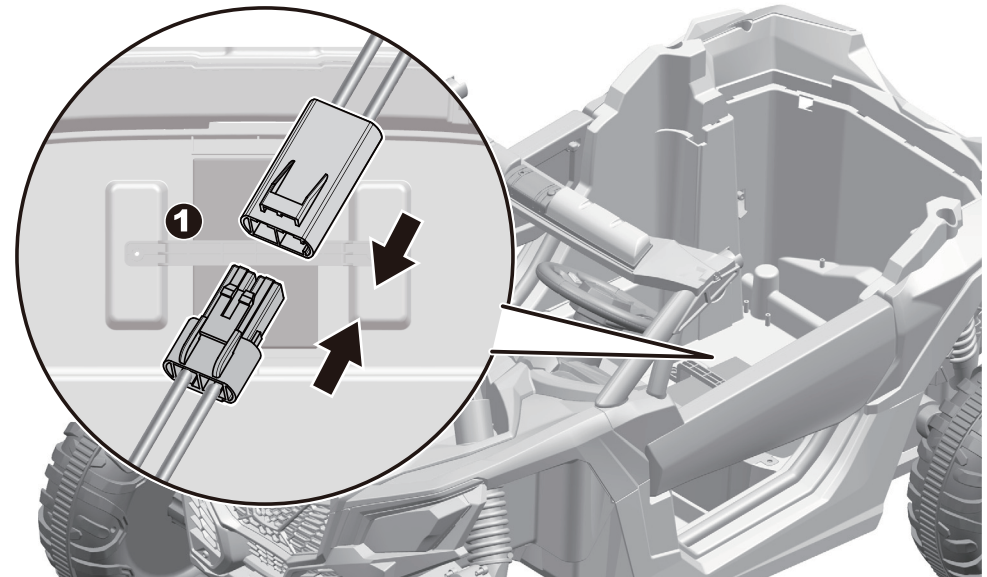
5. Insert the the tabs on the windshield into the holes in the vehicle body, push until you hear it “click” into place.



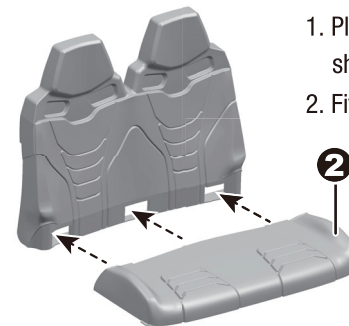




1. Fit the seat board to the vehicle body.
2. Insert two Ø4x12 screws and tighten.
3. Fit the charging port into the groove in the seat board.



1. Plug the Red vehicle connector into the Red battery connector as shown above.
2. Fit the seat to the seat back.



3. Fit the seat assembly to the vehicle body.
4. Insert two Ø4x12 screws through the seat and into the holes on top of the seat board. Tighten them with a screwdriver.

