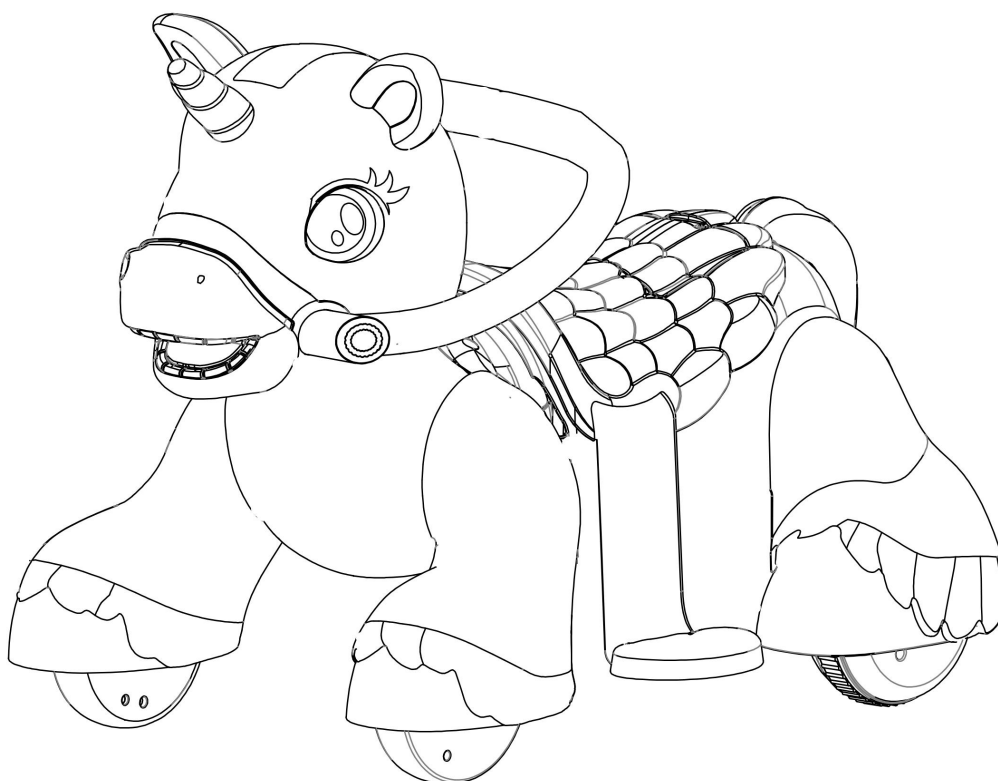


Play & Ride Unicorn Quad



Made in China

Owners Manual

WARNING

This manual contains important safety and use information.
Keep this manual for future reference.

- An adult must read this entire manual
- Adult supervision is required at all times

Age: 18–36 months

Maximum Weight: 44 lbs (20 KG)

Speed: 1.5 MPH

Battery: 6 volt 4 amp hours

Safety

WARNING

FAILURE TO FOLLOW THE SAFETY INSTRUCTIONS LISTED BELOW MAY RESULT IN SERIOUS INJURY OR DEATH.

The owner's manual contains assembly, use and maintenance instructions.

Child Safety Warnings

- Adults supervising children must read and understand this entire manual before allowing any child to use this product.
- Adults must evaluate their own children as to maturity, strength, judgment and ability to follow safety rules. Published age guidelines are not a substitute for careful evaluation of your own child.
- Adults must teach children about thinking ahead while riding as this may be the first time a child has ever controlled a motorized ride-on toy. While you supervise, see through the child's eyes, and verbally teach them about steering and avoiding obstacles in the approved riding area.
- Riding a motorized ride-on toy can be a dangerous activity, even under the best of circumstances. Good choices regarding where and when to ride, constant adult supervision of riding, and practice and careful riding by the child can all help to minimize risk. However this ride-on toy is intended to move and therefore it is possible for the rider to lose control, fall off and/or get into dangerous situations that no amount of care, instruction or expertise can eliminate.
- If this inherent risk is not acceptable, adults should not allow children to ride this ride-on toy.

WARNING

Safe Riding Warnings

- Not to be used by children under eighteen (18) months of age
 - Do not exceed the maximum weight capacity of 44 lbs (20 KG)
 - Do not allow more than one (1) rider.
- ADULTS AND SUPERVISORS, PLEASE NOTE:**
1. Always instruct all children of common sense rules and safe practices.
 2. Be aware that flat, hard surfaces provide the safest experience for child riders.
 3. Do not allow the child rider to operate the ride-on toy near streets, roads, sidewalks, walkways, or any other place where they may encounter other moving vehicles.
 4. Never leave children unattended with this ride-on toy. Continuous adult supervision is required.
 5. If necessary, adults and supervisors are always responsible for setting up gates and barriers to ensure a safe riding environment for the child rider.
 6. Be aware that this ride-on toy does not have braking capabilities. Allowing use of this ride-on toy in areas that require braking may cause rolls, crashes, serious injury, or death to the child rider.
 7. Teach children not to allow other children to use this ride-on toy. Communicate this message to other adults and supervisors of fellow children with which your child interacts.
 8. Sternly alert children that hands, legs, hair, and clothing can potentially get caught in moving parts. Ensure they never place a body part or piece of clothing near a moving part of the ride-on toy. Avoid loose clothing.
 9. Instruct children to always wear shoes when using the ride-on toy.
 10. Confirm that children do not have access to the charging equipment or come into contact with any part of the ride-on toy while it is charging.
 11. Firmly instruct children to use the ride-on toy in a safe manner. Unsafe behaviors include, but are not limited to:
 - Traveling at unsafe speeds
 - Not riding in the seated position
 - Riding at night or in any conditions of low visibility
 - Riding in any wet conditions including rain, snow, and ice
 - Any kind of off-road riding or walking: jumps, ramps, stairs, hills, sloped surfaces, or other actions involving any notable risk
 - Any kind of off-road riding: rough terrain, dirt, mud, gravel, or any others that involve notable risk
 - Riding near any pool or open body of water
 - Pushing, pulling, or shoving the driver in any way while operating the ride-on toy
 - Using the ride-on toy without the battery cover or any other safety cover fully closed
 - Pulling or hitching the ride-on toy with other similar moving ride-on toys or products

⚠ WARNING

Battery and Charging Warnings

The following safety hazards may result in serious injury or death to the user of the ride-on:



Corrosive Material Warnings

- Battery posts, terminals and related accessories contain lead and lead compounds (acids) chemicals and are toxic and corrosive. Never open the battery.
- Contact or exposure to battery leakage (lead acid) may cause serious injury. If contact or exposure occurs with the skin or in the eyes, or if the chemical is swallowed, immediately call 911.



Flammable and Explosive Materials Warnings

- Use of a battery or charger other than the supplied rechargeable battery and charger may cause a fire or explosion. Only use the supplied rechargeable battery and charger with the ride-on toy.
- Do not charge the battery near heat or flammable materials.
- Using the rechargeable battery and charger for any other product may result in overheating, fire or explosion. Never use the rechargeable battery and charger with another product.

- Contact between the positive and negative terminals may result in fire or explosion. Avoid direct contact between the terminals. Lifting the battery by the wires or charger can cause damage to the battery and may result in a fire. Always lift the battery by its case or handles.
- Plug wall charger directly into a wall outlet. Do not use an extension cord when charging as the use of an extension cord can cause a fire.



Electric Shock / Fire Warnings

- Liquids on the battery may cause fire or electric shock. Always keep all liquids away from the battery and keep the battery dry.
- Tampering or modifying the electric circuit system may cause a shock, fire or explosion and permanently damage the system. Exposed wiring, circuitry in the charger may cause electric shock. Always keep the charger housing closed.
- Regularly check charger, supply cord and connector for wear and damage. Look for frayed or kinked wires, any exposed inner wires, any missing insulation. If any damage is observed do not plug in the charger and do not charge the battery.

⚠ CAUTION

Re-Charge Interval and Time Important!

- Damage to the battery may occur if it is allowed to drain completely. Do not allow the battery to drain completely.
- Check the battery and charger (supply cord, connector) for wear and damage before charging. Do not charge the battery if damage has occurred. Do not use an extension cord when charging the ride-on toy.
- On average you will need to charge the battery for 10 hours and no more than 24 hours. Failure to charge the battery as directed could cause permanent damage to the battery and void the warranty.
- Only an adult who has read and understands the safety warnings should handle, charge and recharge the battery.

⚠ WARNING

Assembly Warnings

- The ride-on toy must be assembled by an adult who has read and understands the instructions in this manual.
- Choking hazard to children under the age of 3 years. This ride-on toy contains small parts that are for adult assembly only. Keep small children away when assembling.
- Remove and dispose of all protective materials, plastic bags and packaging before assembly.

Pre-Ride Safety Checklist

To be performed by a supervising adult

Before every ride, it is important to carry out the following safety checks. Do not ride a battery powered ride-on toy that is not in proper working condition! Replace any worn or broken parts as needed.

Steering and Control

- ☐ The reins are tightened and secured.
- ☐ The reins are positioned so that the rider can easily operate and steer the ride-on. There must be no difficulty for the rider in turning and/or operating the hand operated push button.
- ☐ The reins are aligned so that the steering column and front wheels are oriented in the same direction.

Wheels

- ☐ The wheels have no holes or are worn down in any one area and that the traction strips are intact and secured to the wheels.

Ride-on

- ☐ For all electrical components, make sure:
 - The battery is fully charged
 - The charging cord is NOT attached to the ride-on in any way
 - All connectors are securely snapped in place and will not come detached while riding
 - No wiring is exposed, worn, or detached in any way; the motor is not hot to touch
 - All electrical buttons, including the power button, hand operated button, and any buttons for lights and sounds, work properly
 - If the ride-on's electrical components show any sign of damage or missing parts DO NOT RIDE until the condition is corrected
- ☐ **Make sure the ride-on is:**
 - Clean, dry, and in good condition
 - All plastic pieces, including saddle, stirrups, reins, and wheels are securely attached
 - There are no cracks or structural problems on the ride-on toy
 - If the ride-on toy shows any sign of damage or missing parts DO NOT RIDE IT until the condition is corrected
- ☐ **Make sure all safety labels are in place and readable, and understood by the rider.**

Parts Checklist

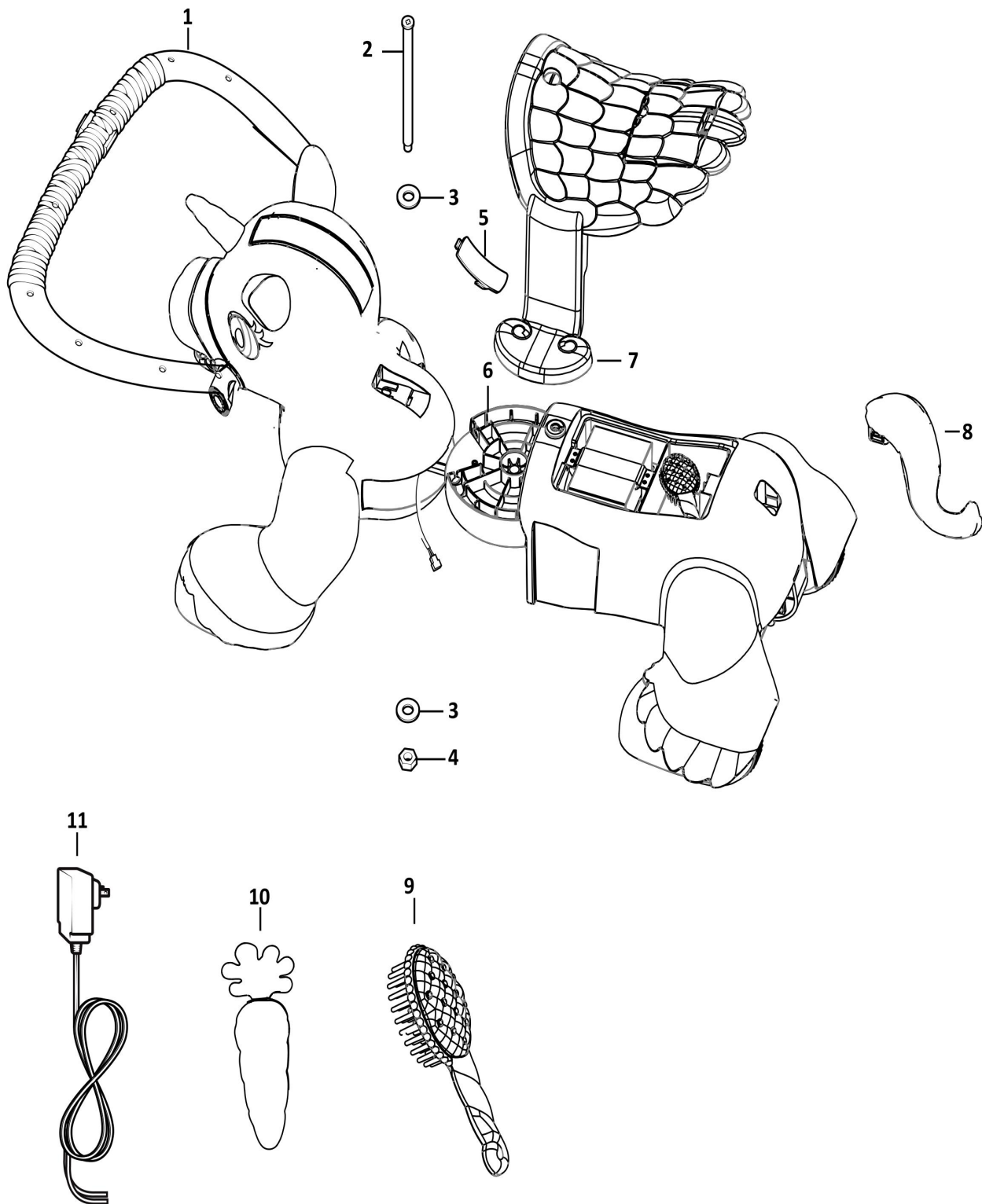
Number	Part name	Quantity
1	Unicorn front-end	1
2	Connecting bolt	1
3	Washers	2
4	Nut	1
5	Bolt cap (top)	1
6	Unicorn backend	1
7	Saddle	1
8	tail	1
9	comb	1
10	carrot	1
11	Battery charger	1

Required Tools



2 Pieces

Parts

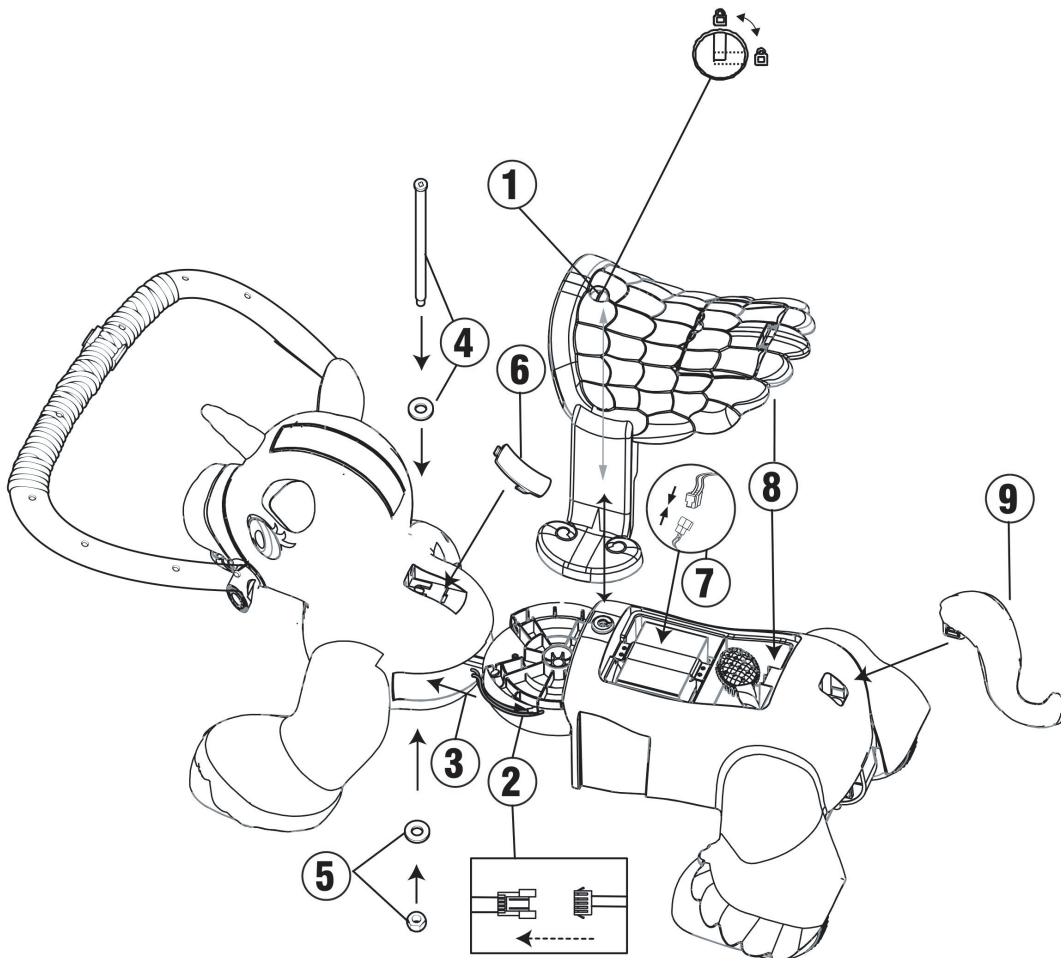


Assembly

Follow the assembly steps in the order listed below.

- ❶ Unlock the saddle and remove it from the Unicorn's back .
- ❷ Connect wire connectors from the unicorn front end and back end, then place the wire into the slots in the round insert of the unicorn's back section and route the connectors through the hole in the front end.
- ❸ Slide the round insert of the Unicorn's back into the slot of the Unicorn front. Warning: take care the wires and connectors don't get crushed in step 2 and step 3.
- ❹ Ensure the bolt holes of the front and back ends are completely aligned. Insert the washer and connecting bolt through the holes until it hits the washer stop.
- ❺ Working from the bottom of the unicorn, insert the washer over the end of the connecting bolt and fasten with the nut and bolt with two provided wrenches
- ❻ Snap the bolt cap over the bolt hole opening.
- ❼ Connect the plugs in battery compartment.
- ❽ Attach the saddle. Place the saddle over the battery compartment. Insert the tab on the underside of the saddle into the back slot of the battery compartment. Rotate the saddle down until the lock inserts into the lock slot. Lock the saddle into place.
- ❾ Attached the tail by snapping it into the backend firm.

Notes: Charge the battery per charging instruction below for 1st time use.

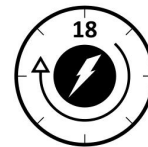
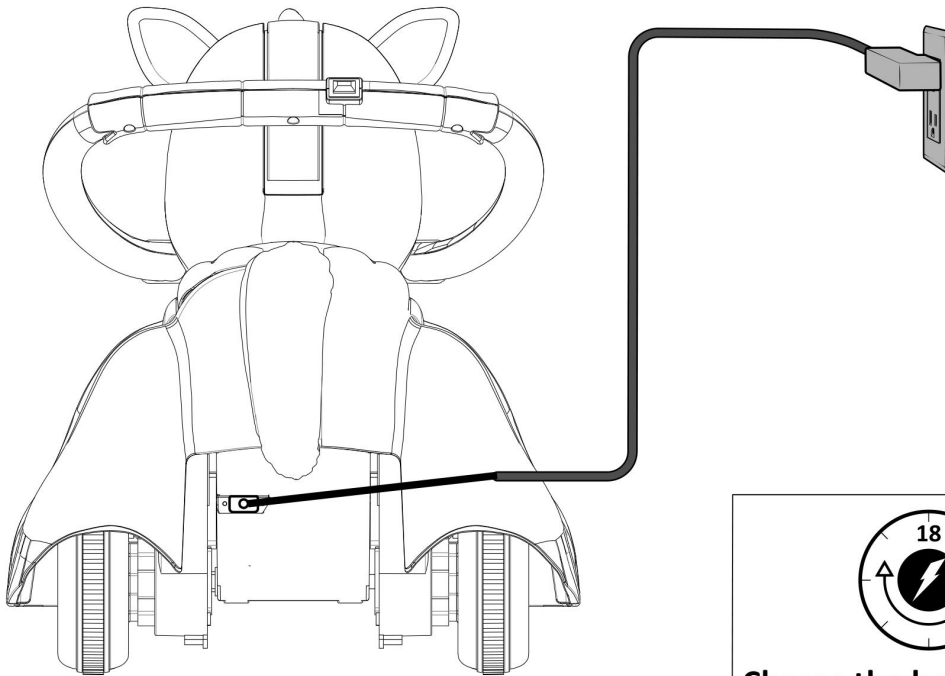


Charging the Battery

NOTICE

- The average time to charge the battery is 10 hours. Failure to follow the instructions regarding charging the battery may result in permanent damage to the battery and void the warranty.
- The battery may become damaged if allowed to drain completely. Always keep the battery charged.

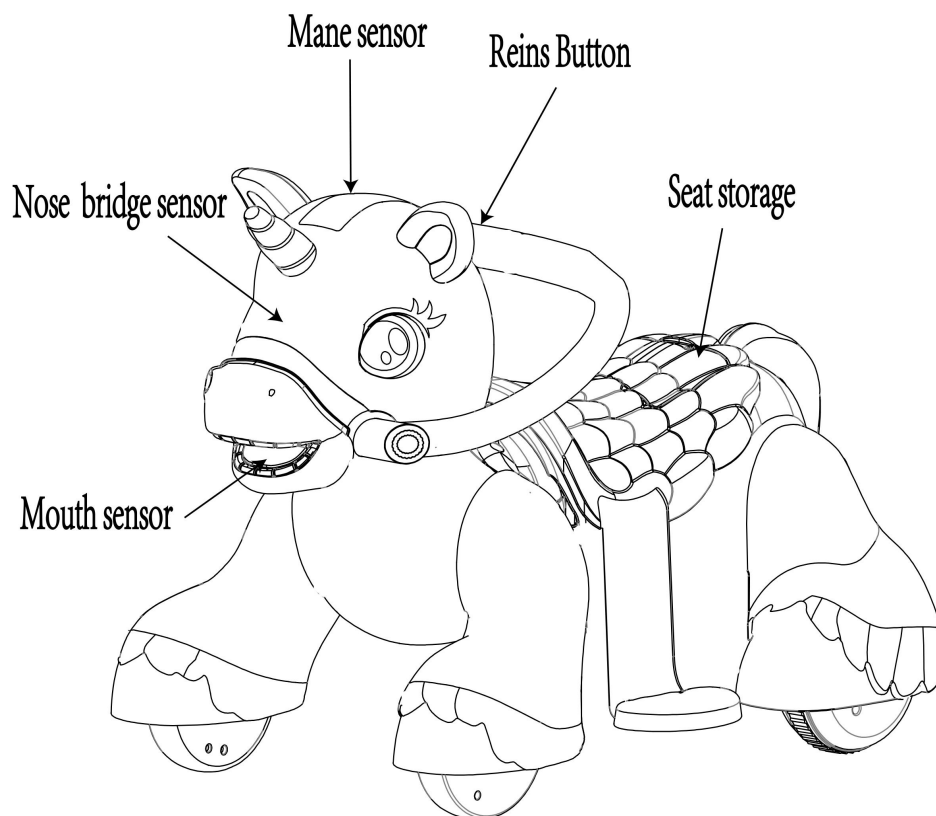
Charge the battery



Charge the battery for 18 hours before first use.



Do not charge the battery for more than 24 hours.



How to play



Feed Me

To feed me, PLACE the carrot half in my mouth.



Pet Me

I make happy noises when you TOUCH my nose's bridge. Keep petting to hear different noises.



Brush Me

STYLE my mane with the brush to hear my happy noises!



Walk Me

PULL the reins in front of my head, then PRESS and HOLD my Reins Button.



Store My Stuff

LIFT the seat lid to store my brush and carrot



Ride Me

Make sure my reins are behind my head. Then PRESS and HOLD my Reins Button.

Maintenance

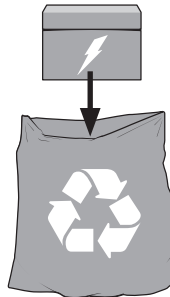
Battery Replacement and Disposal

The battery will eventually lose the ability to hold a charge. Depending on the amount of use, and varying conditions, the battery should operate for one to three years. Follow these steps to replace and dispose the battery.

Important! Recycle the dead battery responsibly. The battery contains lead acid (electrolyte) and must be disposed of properly and legally. It is illegal in most areas to incinerate lead acid batteries or dispose of them in landfills. Take it to a federal or state-approved lead acid battery recycler, such as an authorized service center or your local automotive battery retailer. Do not throw the battery away with your regular household trash!



This ride-on toy contains a sealed lead acid NON SPILLABLE BATTERY. This battery must be recycled.



The ride-on toy should be checked for damage, missing or badly worn parts before each use.

- Check the tightness of the fasteners before each use.
- Check the tightness of the wheels before each use.
- Ensure the battery is securely in place before each use.
- Store the ride-on toy indoors or cover it with a tarp to protect it from the wet weather. Keep it away from sources of heat, such as stoves and heaters.
- Do not leave the unicorn in the sun for long periods of time or fading may occur. Store in shade or cover with tarp.
- Do not wash the quad with a hose.
- Do not wash the vehicle with soap and water.
- Clean the unicorn with a soft, dry cloth. To restore shine to plastic parts, use a non-wax furniture polish. Do not use car wax, abrasive cleaners or wash the vehicle with soap and water. Water will damage the motor, electrical system and battery.

Warranty

Your electric ride-on toy and battery is warranted by for 90 days from the date of original purchase against defects in materials or workmanship. This warranty covers normal use and the coverage is not extended if the unit was damaged by unreasonable use, neglect, accident, abuse/misuse, improper service or other causes not arising out of defects in material workmanship. This warranty does not cover any liability claims for breach of warranty. Please save your original receipt from the original purchase in case of any warranty claims. Save your box in the event the toy has to be returned. Should you need service or assistance with your vehicle during the warranty period, please contact us.

