

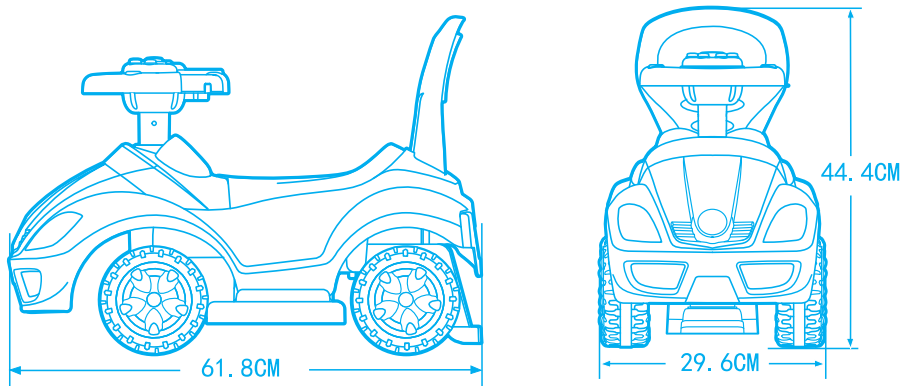
Safety operation guide

This operation guide shows you how to ensure children riding the car with joy and safety. Please read below safety operation guide carefully before use.

- 1) Children should ride the car properly with adult's guidance and instructions, otherwise children themselves or others may be hurt.
- 2) Some possible sharp edge, cuspidal points or small parts may be on the toy before assembly, so the toy should be assembled by adult.
- 3) Don't ride the car in such dangerous places as street, road, steep slopes and beside swimming pool. Otherwise, it may cause traffic accident or drowning hazard.
- 4) The item is only suitable for children of 2 years+. Children must put on protective equipments before use, such as: helmet, hands pads and knee pads.
- 5) The car maximum load is 23 kg. No overload running.
- 6) To avoid suffocation, keep all bags away from babies and children. Dispose of all bags immediately.
- 7) Some parts of the car will be damaged if it is improperly ridden.
- 8) Small parts possibly fall off when this toy car is used, so it is not suitable for children under 2 years old.
- 9) Please frequently check whether the various parts are completely in good condition or not when installing and using, and they should be regularly checked and maintained.
- 10) Instructions are to be kept as they contain important information.

The package contains important information, please keep it.

Dimensions of car



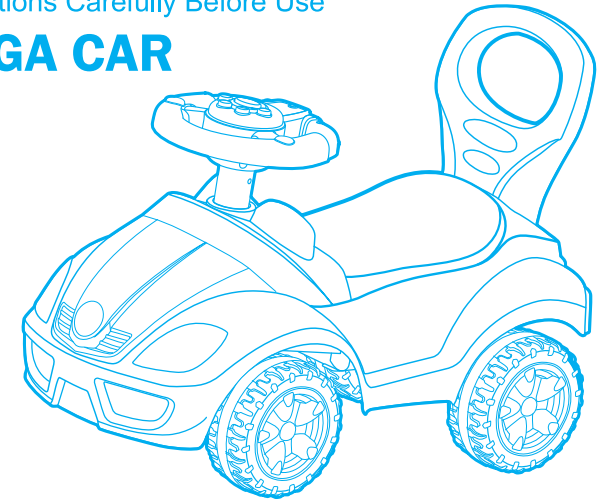
K07-SMS-069-002

002-02

DELUXE MEGA RIDING TOY CAR

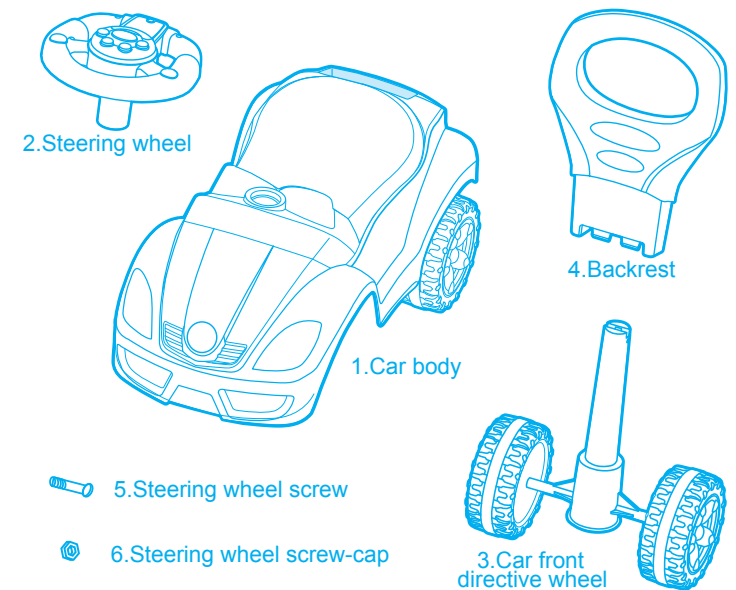
Read Operation Instructions Carefully Before Use

DELUXE MEGA CAR



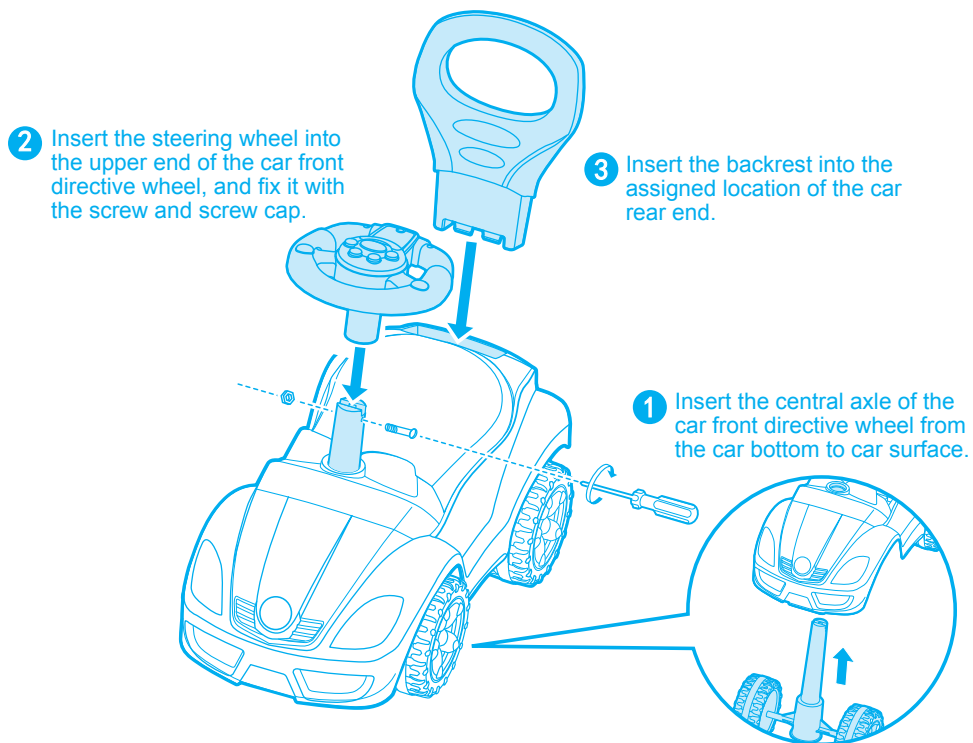
Please read the installation instructions carefully before installation.

Parts list

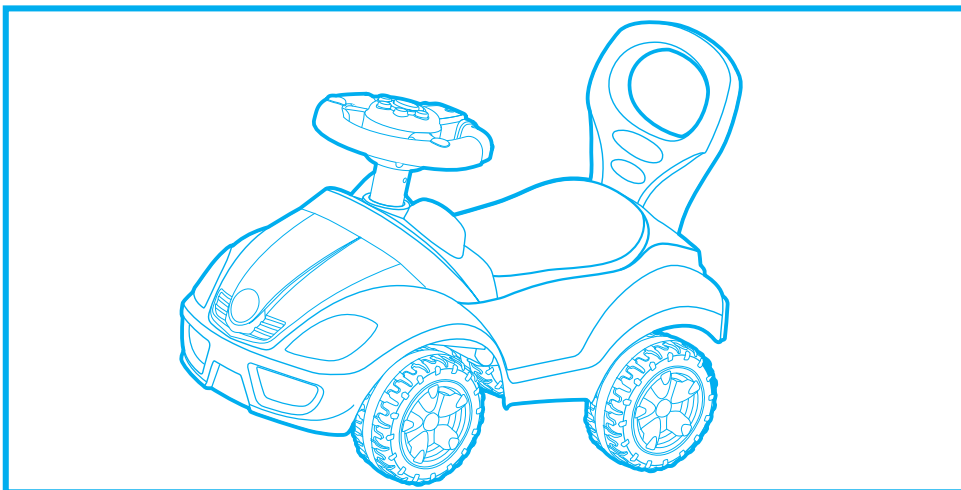


Beginning of assembly

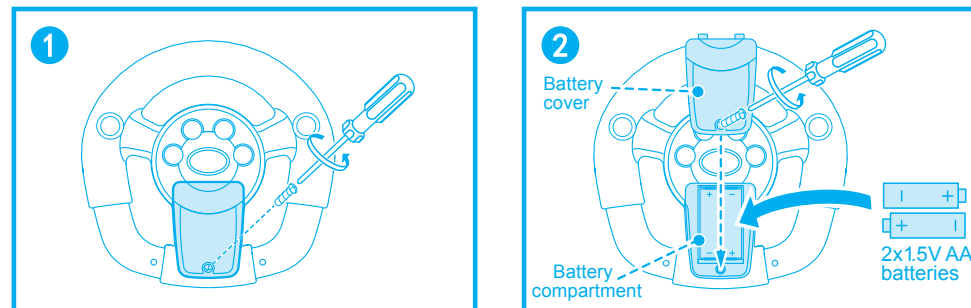
1.Assembly of car body (please see the assembly order)



2.Finished

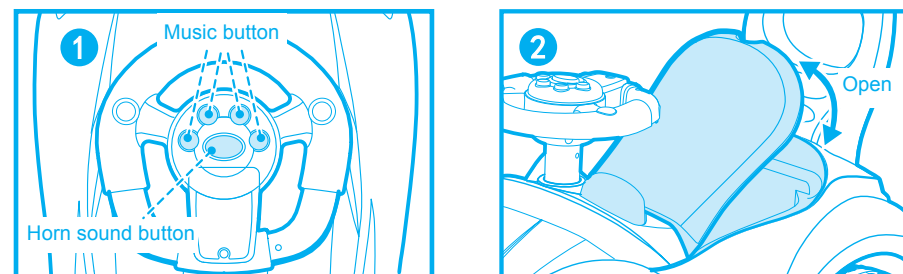


Installation and replacement of steering wheel batteries



Open the steering wheel battery cover (as shown in Figure 1), find the positive pole and negative pole, and put 2AA batteries into the compartment properly, then close the battery cover and fix it with the screw (as shown in Figure 2).

Operating function



One horn sound button and four music buttons are on the steering wheel. Press different music button for different music. Four music in total.

Open the seat and put the goods in it.

Caution! When installing new batteries, dangers such as damage, heat, liquid leakage etc. might happen, please pay attention to the following cautions:

1. This product should use NO.5 AA batteries(2 pieces).
2. Please ask adults for replacing new battery.
3. Install the new batteries correctly; and pay special attention to the positive pole and negative pole.
4. The batteries are not chargeable and should not be disassembled, heated and put into fire, which are to prevent direct short.
5. Non-chargeable batteries should not be charged, chargeable batteries should only be charged under the guidance of adults. Chargeable batteries should be taken out from the toy before charging.
6. Please do not mix different type batteries, used batteries and new batteries; mixed battery use would affect the operational life span of batteries, and used batteries would have the danger of liquid leakage and damage etc. Thus the batteries should be replaced entirely.
7. When the electric power of battery is insufficient, the audio would be muted, and the music could not keep pace with the rhythm. under which condition new batteries should be installed.
8. If the batteries are not being used for a long time, please take batteries out to avoid liquid leakage. Please take batteries out when out of electric power.
9. The power supply terminals should not be direct short.